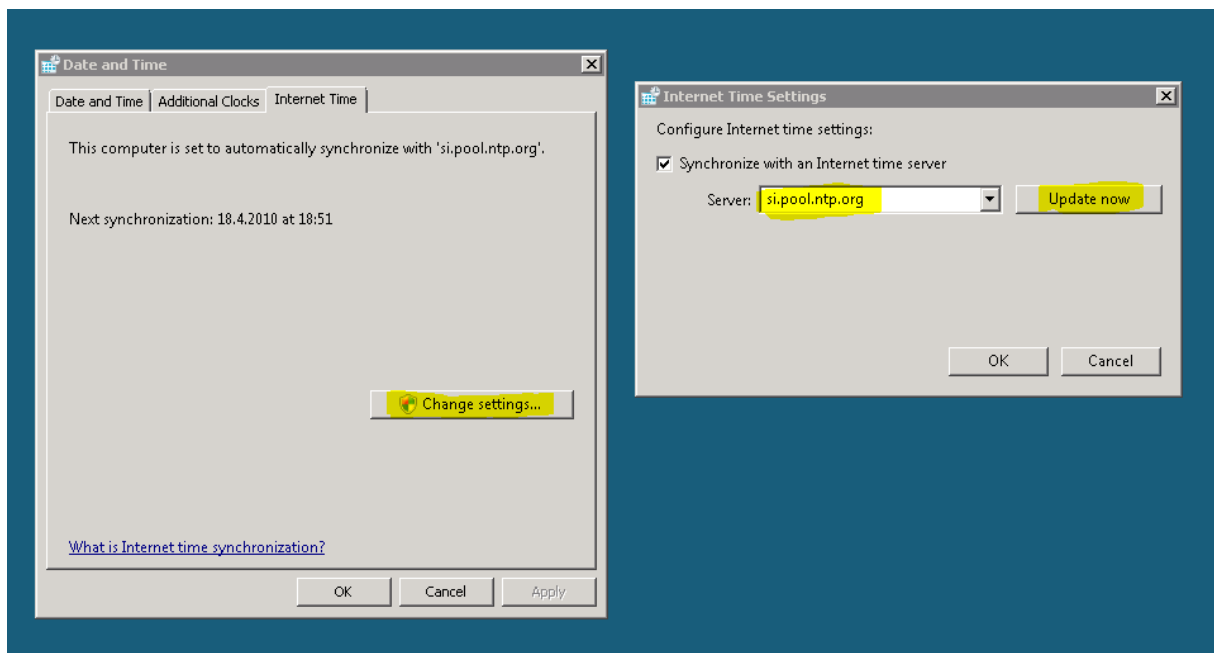


Time sync in SBS 2008 virtualized on Hyper-V

Part – 1 – configuring correct time on Hyper-V host that is not joined into domain

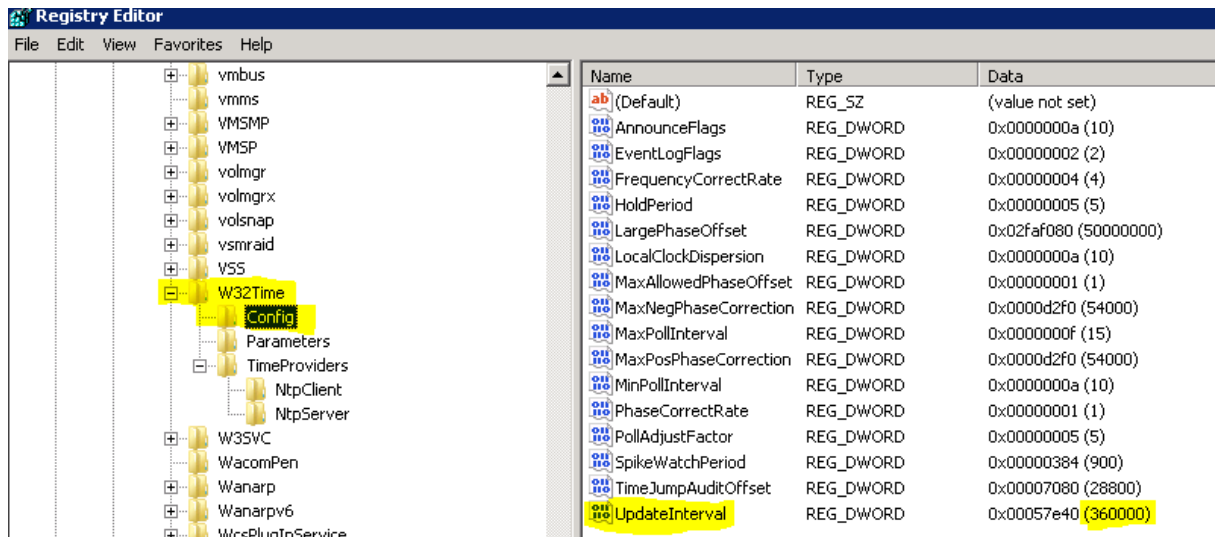
First of all I do set-up time synchronization on Hyper-V host

I use servers from pool.ntp.org (<http://www.pool.ntp.org>) and as I am from Slovenia I use si.pool.ntp.org – cluster of Slovenian NTP servers that are geographically near to me.

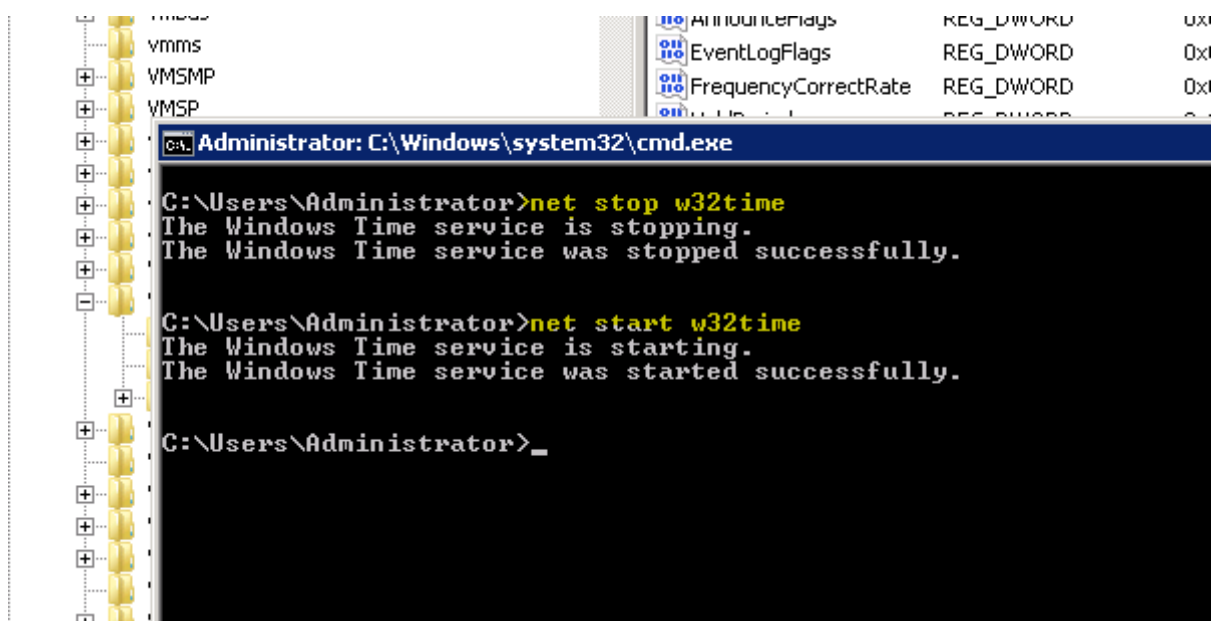


Again! This configuration is set on my Hyper-V host because I want my machines to have correct time and as Hyper-V host in my case is not joined into domain I want to configure time source separately.

Another thing that I do is reducing time between synchronization. For this example I will reduce it to one hour – 3600 seconds.



Just change the value to 3600 – the value that you are seeing in this screenshot is **default Windows value** and you can leave it like that but if you want your Hyper-V server to check for exact time more often just go ahead and change this value to lower one. Remember this value is **decimal** and represent **seconds**.



After changing value you need to restart w32time service – remember you need to run command prompt as administrator to restart the service.

OK – now we have our Hyper-V server with accurate time – this procedure can be used on any standalone workgroup server – as my Hyper-V host in SBS 2008 environment is not joined into domain (so it does not get the time from AD) I like that it has correct time.